



ARNOLD LODGE

4 - 18 yrs Co-educational Independent Day School

SIXTH FORM PROSPECTUS

For Entry September 2023



HELLO
BONJOUR
HOLA
NI HAO
CIAO

ALS lets ME
ACHIEVE

CONTENTS

PAGE	CONTENTS
4	The Sixth Form at Arnold Lodge
5	Sixth Form and Subject Options
6	Dress and Expectations
8	Entry Requirements
9	Subject Specific Entry Requirements
10	Choosing Subjects
11	The Douglas Hall Sixth Form Scholarship
12	Higher Education Destinations
14	A Level Art, Craft & Design
15	A Level Biology
16	A Level Business
17	A Level Chemistry
18	A Level Computer Science
19	BTEC Creative Digital Media Production
20	A Level Design Technology
21	A Level Drama and Theatre
22	A Level English Literature
23	BTEC Food Technology
24	A Level Geography
25	A Level History
26	A Level Mathematics
27	A Level Music
28	BTEC Music Composition / Performance pathway
29	A Level Physics
30	A Level Politics
31	A Level Psychology
32	A Level Sociology
33	A Level Spanish
34	BTEC Sport



4 - 18 yrs Co-educational Independent Day School

The Sixth Form at Arnold Lodge School

Our academic results - particularly the progress pupils make - are exceptional. The A Level results from our 2022 cohort at Arnold Lodge Sixth Form were outstanding. With **45% at A*-A, 73% A*-B** and a **100% pass rate**, we are very proud of the achievement of our pupils. While the headline figures are excellent, it is our value added (the number of grades scored above targets taken from external benchmarking) that truly reflect the quality of our provision. For every examination taken, Arnold Lodge pupils scored on average **1 grade higher than targeted**. Since 2017 the results received by pupils at Arnold Lodge Sixth Form have been excellent, in 2018, our BTEC and A Level results were remarkable with a **95% pass rate** and **12% more A*/A** grades than targeted. In 2019, our BTEC and A Level results continued the trend with **1.4 of a grade higher than targeted per pupil**, a **100% pass rate** and **18% more A*/A** grades than targeted. For 2020, our results at BTEC and A Level were, once again, first rate; **10% at A*, 32% A*-A, 55% A*-B** and a **100% pass rate**. And 2021 followed in a similar trend with **21% at A*, 58% at A*-A, 69% A*-B** and a **100% pass rate**. The key thing is that, each year, our pupils attain more than their target grades showing that we are able to drive pupils to their very best marks at A Level and BTEC. Whatever your ambitions, Arnold Lodge Sixth Form will be able to support you to achieve your very best academically.

What is unique about Arnold Lodge Sixth Form?

ALS Sixth Form offers a range of A Level and BTEC subjects to provide a **truly bespoke Sixth Form curriculum**. Whether pupils are looking to apply to Oxbridge with a full set of A grades or if they need to re-sit English & Mathematics GCSEs as part of a BTEC and A Level combined course, our curriculum and approach to education provides the opportunity and support for each pupil to fulfill their aspirations. This flexibility, coupled with an average **Sixth Form class size of 10**, allows us to give significant teaching time, academic challenge and personal support to ensure our pupils achieve their very best academically.

How are students stretched beyond the formal curriculum?

It's not just the examination performance that makes ALS Sixth Form outstanding; the confidence and wider skills that our pupils develop over their two years of study – skills such as **communication, creativity, critical thinking and collaboration** – provide a wonderful foundation for study at university and the world of work. Our enrichment programme provides a breadth of opportunity and experience for our Sixth Form pupils. As part of enrichment, pupils will learn to cook, to budget, tackle their EPQ, be given opportunities to visit universities and prepare themselves for their futures.

Arnold Lodge aims to support pupils to be happy and confident whilst developing their skills and knowledge so they can be successful in their aspirations. Our core values – **honesty, hard work and kindness** – are central to the success of our school and these are given as much importance in our Sixth Form as they are throughout the rest of the school.

How will an education at Arnold Lodge's Sixth Form benefit my child in subsequent years?

Our former pupils have been very successful in receiving their first choice university and, for quite a number, unconditional offers. Much as this is a reflection of high quality academic outcomes, it also demonstrates the advice and guidance that pupils receive throughout the UCAS process.

Is financial support available?

The Douglas Hall Sixth Form Academic Scholarship carries a significant reduction in fees. It is typically awarded to pupils who are set to achieve all grades 8 or 9 in their GCSEs. Selection involves interviews in the subjects that candidates wish to take at A Level, a general interview, references and an academic assessment.

This booklet contains information which I hope you will find useful. Should you have any further questions about Arnold Lodge Sixth Form, please do not hesitate to get in touch.

Best wishes,

David Preston
Headteacher

ALS SIXTH FORM

Sixth Form - September 2023

Every child deserves the opportunity to fulfill their own potential in an environment where they feel safe, supported and encouraged to improve, progress and grow. This central ethos of Arnold Lodge continues through into our Sixth Form.

To ensure that we provide the **flexible** and **bespoke** education we pride ourselves on, we also offer BTEC subjects alongside a range of A Level options for pupils. Few independent schools in the country offer this sort of flexibility and the opportunity to take both A Level subjects and BTEC combined provides pupils with a wonderful opportunity to build a programme of study at Sixth Form that is exactly right for them.

While this prospectus is designed to give you more information on the topics studied and what pupils can expect from those subjects, this is not definitive. If you would like more information on a particular subject, please contact the named teacher on the subject page. Similarly, if there is a subject you're interested in which is not listed, please let us know.

Subject Options

- Art, Craft & Design
- Biology
- Business
- Chemistry
- Computer Science
- Creative Digital Media Production
- Design Technology
- Drama & Theatre Studies
- English Literature
- Food Technology
- Geography
- History
- Mathematics
- Music
- Music Composition
- Physics
- Politics
- Psychology
- Sociology
- Spanish
- Sport



ALS SIXTH FORM

Dress and Expectations

As a Sixth Form student you will be relied upon to dress in a manner that is interview ready. This means dress of a business standard, suitable for life in a busy office. The following guidelines may help:

GIRLS	BOYS
<ul style="list-style-type: none"> Trousers may be full or $\frac{3}{4}$ length, but no shorter. Any cropped trousers must be formal and tailored. Skirts and dresses should not be too short (with a hem at least on the knee). Shirts, blouses and other smart tops may be worn, plus smart shoes. Jewellery in Sixth Form should be appropriate to a business environment. One nose piercing with a small, discreet stud is allowed. Nails must be discreet in appearance. 	<ul style="list-style-type: none"> Ties must be worn with the top button fastened. Smart jumpers, cardigans or waistcoats may be worn over a shirt and tie. Hooded tops are not permitted.

YOUR EXPECTATIONS OF US	OUR EXPECTATIONS OF YOU
<ul style="list-style-type: none"> A programme that is matched to your interests and aspirations A tutor who monitors your progress, provides guidance and assistance in setting targets for improvement, and supports you in other aspects of life Structured private study time with regularly set and marked work to be completed during private study Support in developing good study skills and dealing with stress A higher education and careers guidance programme suited to your needs, with expert advice The opportunity to take part in the wider school, including inter-House and extra-curricular activities and involvement in the education of younger children Opportunities for your parents to come into school to discuss your progress Regular reports on your progress 	<ul style="list-style-type: none"> Be determined to make the most of your time in the Sixth Form Accept responsibility for your own learning with support from your tutor and subject teachers Complete all your work to the best of your ability and by the deadline set Effectively use your private study time in school Act as a positive role model for the younger students in both the school and the community Adhere to the Sixth Form dress code Maintain an excellent record of attendance and excellent punctuality Discuss with your tutor in advance if you need to be absent Use the signing in/out system correctly Contribute to the life of the school and of the Sixth Form in as many ways as possible



ALS SIXTH FORM

What can I expect from ALS Sixth Form?

Sixth formers at Arnold Lodge School can expect:

- **Seminar style classes**, which ensures that the teaching is cooperative and that learning is paced to suit the individual.
- **Regular, accurate and personal feedback about work, progress, targets and expected grades** means that students and parents are fully able to take part in and guide the Sixth Form experience. A policy of 'no surprises' avoids problems late in the course and enables all to get the best from their studies.
- **Support for self-study.** Using the Study Hub as a base, Sixth Formers can expect a specifically designed room for self-study and the opportunity to develop self-study skills. This space was created for September 2021 and designed to give the pupils plenty of space to study and revise, as well as the support to manage their time to achieve their very best.
- **Periods of non-contact with teachers.** Alongside normal periods of non-contact used for self-study, Sixth Form students can expect one Games session per week along with one session of Enrichment. Enrichment will focus on life skills to make sure that, when completing their courses at ALS, Sixth Formers have the right skills and knowledge for their next steps be that work, apprenticeship or university.
- **An Enriching Experience:** Enrichment afternoons are used to build life experiences and transferable skills for our Sixth Form pupils. This covers team building activities, financial skills, enterprise, cooking, careers, guest speakers covering a whole range of topics, UCAS to prepare applications and even then this is just a snippet of the programme. The time is used to ensure that, when our pupils complete their courses, they are equipped for their next adventure be that a gap year, a career, an apprenticeship or their first choice university.



ALS SIXTH FORM

Entry Recommendations & Academic Standards for A Level

The following information provides an idea of the sort of standard pupils can expect to work at A Level based on their GCSE grades. This is useful information but is not definitive. Arnold Lodge will *never* accept that a pupil is a pre-determined set of data. Some pupils flourish when studying A Levels and others find it a real step up to maintain their GCSE pace. Either way, our highly experienced staff will be there to provide the support, guidance and advice necessary to help all pupils to progress and attain the very best that they can.

- The recommended minimum criteria for progression into ALS Sixth Form is **five GCSEs at grade 5 and above**, including English and Mathematics.
- To access the A Level pathway five grade 6s at GCSE including English and Mathematics at 5+ is required.
- In most subjects, a **grade 6 in that subject** or a closely related one is preferred, but in **languages, mathematics and the sciences a grade 7** is the advised starting point. A full breakdown by subject can be found on the following page.

These are *recommendations* rather than rigid requirements. Discussions can be held with pupils and those not meeting this standard or not expecting to do so may be accepted after further discussion. Progression from the Lower Sixth to the Upper Sixth is conditional on achieving pass grades (A to E) in the subjects to be taken at A2 level.



ALS SIXTH FORM

Subject Specific Entry Requirements

To be accepted into Arnold Lodge Sixth Form, students must have achieved a grade 5-9 in English Language and Mathematics plus three other GCSE subjects at grade 5 or above. The criteria for entry to the 3 A Level pathway is 5 grade 6s as well as pass grades in English and Mathematics. In addition to these basic requirements, each subject has specific entrance requirements which need to be met/ exceeded in order to be enrolled onto the course.

SUBJECT	SPECIFIC ENTRY REQUIREMENTS
A Level Art, Craft & Design	Candidates should have gained a minimum of a grade 6 in Art and Design at GCSE in order to study this course. A portfolio of student work would also be beneficial.
A Level Biology	Candidates should have gained a minimum of a grade 7 at GCSE Biology or a 76 if a dual award was completed.
A Level Business	Candidates should have gained a minimum of a grade 6 at GCSE Business if studied. If Business was not taken at GCSE then a 5+ in Maths is needed.
A Level Chemistry	Candidates should have gained a minimum of a grade 7 at GCSE Chemistry or a 76 if a dual award was completed. Maths at Grade 7+ is also required.
A Level Computer Science	Candidates should have gained a minimum of a grade 6 at GCSE Computer Science or a 6+ in GCSE Maths if not studied,
BTEC Creative Digital Media Productions	You do not need to have studied GCSE Media to study this course. A grade 5+ at GCSE English is required..
A Level Design Technology	Candidates should have gained a minimum of a grade 6 at GCSE Design Technology or have grade 6+ in English and Maths. A portfolio of student work would also be beneficial.
A Level Drama & Theatre Studies	Candidates should have gained a minimum of a grade 6 at GCSE or a Merit in Performing Arts.
A Level English Literature	Candidates should have gained a minimum of a grade 6 at GCSE English Language or English Literature.
BTEC Food Technology	Candidates should have gained a minimum of five GCSEs at grades 5-9. A grade 6 at GCSE Food is preferred but not essential.
A Level Geography	Candidates should have gained a minimum of a grade 6 at GCSE Geography where studied. All students would need a grade 5+ in Maths and English.
A Level History	Candidates should have gained a minimum of a grade 6 at GCSE History or at GCSE English where not studied.
A Level Mathematics	Candidates should have gained a minimum of a grade 7 at GCSE Maths.
A Level Music	Students must have Grade 6 in an instrument and a grade 7+ at GCSE Music.
BTEC Music Composition	Students must have Grade 3 in an instrument and a grade 4+ in GCSE Maths and English, or Level 2 Functional Skills Qualification.
A Level Physics	Candidates should have gained a minimum of a grade 7 at GCSE Physics or a 76 if a dual award was completed. Maths at grade 7+ is also required.
A Level Politics	Candidates should have gained a minimum of a grade 6 at GCSE History or English.
A Level Psychology	Candidates should have gained a minimum of a grade 6 at GCSE Psychology where studied. A 5+ in English and Maths at GCSE is required.
A Level Sociology	Candidates should have gained a minimum of a grade 6 at GCSE Psychology where studied. A 5+ in English at GCSE is required.
A Level Spanish	Candidates should have gained a minimum of a grade 7 at GCSE Spanish.
BTEC Sport	Successful completion of GCSE PE is preferred but not a pre-requisite.

A LEVEL INFORMATION

Choosing Subjects

While picking subjects to study in Sixth Form can be a very difficult decision, the flexible nature of our curriculum means that pupils are given the option of a range of A Level and BTEC subjects which allows them to mix and match between the two types of qualifications to create a bespoke programme of study specifically aimed at their interests, skills and talent.

- When picking their courses, students should take into consideration that **4 to 6 hours of teaching** and **3 hours of private study** will be spent on each A Level subject and the equivalent time for BTEC subjects per week.
- It is important to consider **future careers** along with likes and dislikes at GCSE, and take advice from school, parents and other sources of information before selecting.
- For some years, the old routes of sciences and maths to the exclusivity of the arts and vice versa have not applied. Students may choose from a broad range of subjects and mix traditional with modern subjects to produce a combination which suits them best and well equips them for the future.
- If studying A Levels, pupils will pick three A Level subjects and in exceptional circumstances, pupils may take four.

We are here to help with your decision - and if you feel that you would like further support to make the right choice, please contact **Mrs Sweetman** (lsweetman@arnoldlodge.com) who will happily help you.





4 - 18 yrs Co-educational Independent Day School

SCHOLARSHIP

The Douglas Hall Sixth Form Scholarship

In honour of Mr Douglas Hall who was Headmaster of Arnold Lodge during the early 20th Century, Arnold Lodge has introduced the Douglas Hall Sixth Form Scholarship. The scholarship may be honorary or carry a fee reduction for exceptional excellence. The Douglas Hall Scholarship will be available for academic excellence, particularly in the subjects pupils are wishing to study.

Scholarship assessment takes place in the academic year before a pupil looks to join Arnold Lodge and parents are usually notified of a decision within two or three weeks of assessment. Pupils must be recommended by their current Headteacher. Before being assessed, parents must register their child after which a reference from the pupil's current school will be requested.

A very limited number of assisted places may be available for entry to Arnold Lodge in cases where a pupil does not meet the requirements for a scholarship. Arnold Lodge will also consider bursary applications from parents of children who have been awarded a scholarship but may not be able to consider Arnold Lodge for financial reasons. Parents can apply to have the scholarship augmented by a bursary, subject to a means test. All awards are subject to the school's ability to fund them within the context of its overall budget, and therefore levels cannot be guaranteed.

The Headteacher has the right to withdraw a scholarship at any time if behaviour, commitment and progress are not being maintained.

For more information on the Douglas Hall Scholarship, contact Camilla Nunn (admissions@arnoldlodge.com).





4 - 18 yrs Co-educational Independent Day School

Higher Education Destinations

Accountancy and Finance - Northampton University

Applied Sports Science with Management - Loughborough University

Business Management - Exeter University

Business with Marketing - Birmingham City University

Business Management with Geography - Liverpool Hope University

Computer Science - University of Plymouth

Criminology - Oxford Brookes

Economics - University of Manchester

English - University of Warwick

Football, Business and Media - UCFB

Human Sciences - UCL

History and Politics - University of Birmingham

Law with Social Sciences - University of Warwick

Modern Languages with Business - University of Nottingham

Politics and International Relations - Loughborough University

Sociology - Birmingham City University





WJEC
Level 3 Applied Certificate & Diploma
CRIMINOLOGY

Written by an experienced Criminology teacher and examiner, this highly visual and engaging textbook will support you through your WJEC Level 3 Applied Certificate in Criminology course and help to prepare you for assessment. Tailored to WJEC, this book offers high-quality support you can trust.

Art, Craft & Design

A Level

Lead teacher: Mr Browitt

Duration: 2 years

Level of course: A Level

Exam board: AQA

What will I study?

Year 12 - Year 12 is a preparatory course which develops skills, contextual understanding and course knowledge ready for Year 13. Throughout the year pupils work on a combinations of sustained projects and practical workshops. They will also have the opportunity to complete a mock personal investigation essay.

Year 13 - Component 1: Personal investigation. You will choose your own starting point and explore this to reach an outcome. This will include a written study to support your work (1000-3000 words). **No time limit (96 marks maximum). 60% of A Level.**

Component 2: Externally set assignment where you choose from a series of questions. You will demonstrate your knowledge, creativity and skills through your exploration and presentation. **Prep time plus 15 hours supervised time (96 marks maximum). 40% of A Level.**



What can I do after this course?

After studying for your Art and Design many go on to higher education or to the world of work. Art and Design can be successfully combined with other Arts based subjects or as a contrast to Science or Maths based subjects. Art and Design is a subject relevant to everyday life and is useful for many careers. Students may choose to pursue either Art or Design based courses or creative careers following on from this course.

Further details

Students wishing to study Art and Design should be aware that the course requires a substantial amount of visual coursework as well as supporting written work. Students should also be prepared to research and analyse a large number artists and designers work which will necessitate a high degree of independent learning outside of lessons, including gallery and museum visits. The specification for A level Art and Design directly relates to and follows on from GCSE Art and Design, however students have greater flexibility, creative input and time in order to stretch their abilities. Across the course, students must cover a minimum of two disciplines within their work from fine art, textiles, photography, graphic design and 3D.

Email contact

Mr J Browitt

Email: jbrowitt@arnoldlodge.com

Biology

A Level

Lead teacher: Mr Brewer

Duration: 2 years

Level of course: A Level

Exam board: AQA

What will I study?

Module 1: Development of practical skills in biology

Module 2: Foundations in biology covering cell structure, biological molecules, enzymes, biological membranes and cellular organisation

Module 3: Exchange and transport covering plants and animals

Module 4: Biodiversity, evolution and disease covering the immune system, disease prevention and classification

Module 5: Communication, homeostasis and energy covering hormones, the nervous system, plant and animal responses, photosynthesis and respiration

Module 6: Genetics, evolution and ecosystems covering cellular control, inheritance, biotechnology, and populations and sustainability

Assessment: How will I be assessed?

- Paper 1: 35% of A level 2hr written paper (91 marks)
- Paper 2: 35% of A level 2hr written paper (91 marks)
- Paper 3: 30% of A level 2hr written paper including an essay (78marks)

Practical endorsement in biology—a minimum of 12 practical activities.

What can I do after this course?

After studying for Biology A Level many students go on to higher education or to the world of work. Biology is a subject relevant to everyday life and is useful for many careers. The skills acquired studying biology equip students for careers in the clinical and health professions as well as other biological related areas. Biology also can be successfully combined with other subjects as it requires excellent analytical skills, as well as the ability to communicate effectively.

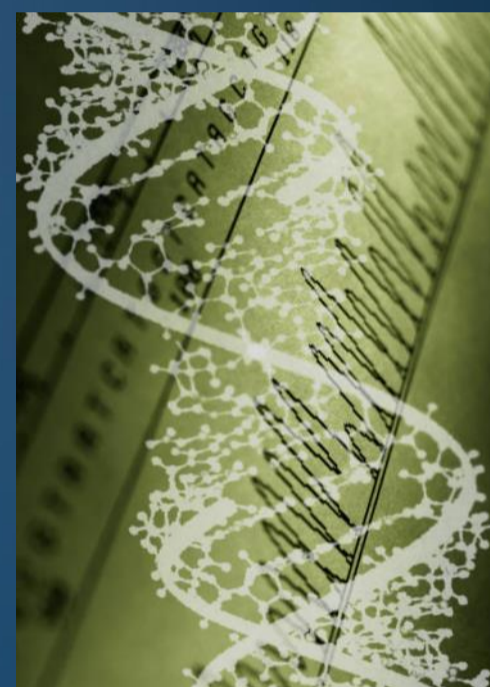
Further details

- Students wishing to study Biology should be aware that the course contains a significant quantity of maths so candidates should therefore be comfortable handling data.
- Students should also be prepared for a high degree of independent learning outside of lessons.
- For further details, please see below for the specification used: <https://filestore.aqa.org.uk/resources/biology/specifications/AQA-7401-7402-SP-2015.PDF>

Email contact

Mr D Brewer

Email: dbrewer@arnoldlodge.com



ARNOLD LODGE



4 - 18 yrs Co-educational Independent Day School

Business

A Level

Lead teacher: Mrs Caviezel-Cox **Duration:** 2 years

Level of course: A Level **Exam board:** Edexcel

What will I study?

Theme 1: Meeting customer needs, The market, Marketing mix and strategy, Managing people, Entrepreneurs and leaders

Theme 2: Raising finance, Financial planning, Managing finance, Resource management, External influences

Theme 3: Business objectives and strategy, Business growth, Decision-making techniques, Influences on decisions, Assessing competitiveness, Managing change

Theme 4: Globalisation, Global markets and business expansion, Global marketing, Global industries and companies (multinationals)

Assessment: How will I be assessed?

Paper 1 - Themes 1 & 4
35% of total / 2 hours / 100 marks

Paper 2 - Themes 2 & 3
35% of total / 2 hours / 100 marks

Paper 3 - Assess all four themes and is based off a pre-release
30% of total / 2 hours / 100 marks

What can I do after this course?

After this course students will have developed transferrable skills such as financial management, communication, being able to undertake research, evaluation, analysis and independence. Students will also work on skills such as numeracy and literacy in order to make a smooth transition to the next level of study.

Email contact

Mrs L Caviezel Cox

Email: lcaviezelcox@arnoldlodge.com





Chemistry

A Level

Lead teacher: Mrs Jaffri

Duration: 2 years

Level of course: A Level

Exam board: AQA

What will I study?

The course is made up of three units: Organic, Inorganic and Physical Chemistry. For each of the Organic and Inorganic units, the Physical chemistry aspects are intertwined with the subject content, to allow a greater understanding of the relevance of these techniques. This course is designed to be taught as a two year course with the AS content being taught in the first year. This allows a greater flexibility for students who are unsure whether to sit an AS or the full A Level course.



Assessment: How will I be assessed?

A LEVEL:

Paper 1: Inorganic Chemistry and relevant Physical Chemistry topics, plus practical skills - 2 hours, 105 marks, 35% of A Level.

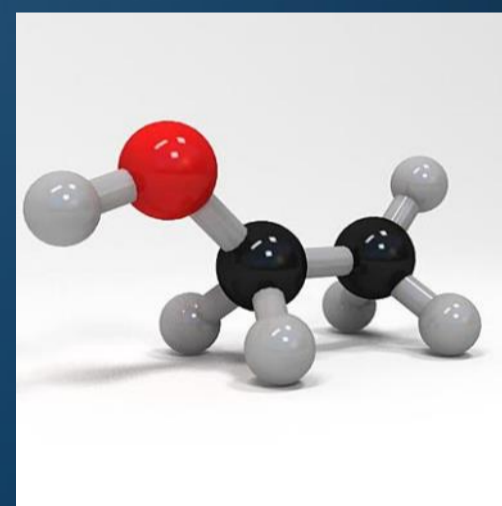
Paper 2: Organic Chemistry and relevant Physical Chemistry topics, plus practical skills - 2 hours, 105 marks, 35% of A Level

Paper 3: All content - 2 hours, 90 marks, 30% of A Level

AS LEVEL:

Paper 1: Inorganic Chemistry and relevant Physical Chemistry topics, plus practical skills - 1.5 hours, 80 marks, 50% of AS Level.

Paper 2: Organic Chemistry and relevant Physical Chemistry topics, plus practical skills - 1.5 hours, 80 marks, 50% of AS Level



What can I do after this course?

Chemistry is a perfect choice of subject for people who would like a career in health and clinical professions such as nursing, medicine, biochemistry or forensic science, as well as opening up many industrial routes for example in the petrochemical or pharmaceutical industries. It is also recognized as one of the 'hardest' A Levels so success in chemistry is valued by employers.

Further details

Chemistry is conceptually difficult but also includes a requirement for a significant amount of learning of facts. No A Level is an easy route, but chemistry is one of the hardest. It's therefore one of the most rewarding. Teaching of this is of course split between theoretical and practical work, with practical assessments playing a key part.



Email contact

Mrs S Jaffri

Email: sjaffri@arnoldlodge.com

Computer Science

A Level

Lead teacher: Mr Sweetman

Duration: 2 years

Level of course: A Level

Exam board: Cambridge International

What will I study?

Paper 1: Information representation, Communication, Hardware, Processor Fundamentals, Systems Software, Security, privacy and data integrity, Ethics and Ownership, Databases

Paper 2: Algorithm Design and Problem-solving, Data Types and structures, Programming, software development

Paper 3: Data Representation, Communication and internet technologies, Hardware and Virtual Machines, System Software, Security, Artificial Intelligence

Paper 4: Computation thinking and problem solving, Further Programming



Assessment: How will I be assessed?

Paper 1: Theory Fundamentals (25%) - 1 hour 30 min examination

Paper 2: Fundamental Problem-solving and Programming skills (25%) - 2 hour examination

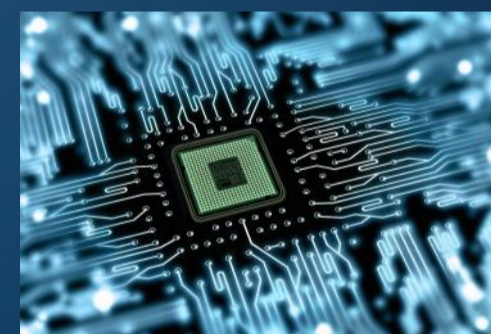
Paper 3: Advance Theory (25%) - 1 hour 30 min examination

Paper 4: Practical (25%) - 2 hours 30 min examination

What can I do after this course?

A good grade in Computer Science at A level is valued by universities and employers since it requires the development of analytical thinking and problem solving skills. This course also lays an appropriate foundation for further study of Computer Science, Engineering, Physics or related subjects in higher education.

Many problems in the sciences, engineering, health care, business and other areas can be solved effectively with computers, but finding a solution requires both computer science expertise and knowledge of the particular application domain. Thus, computer scientists often become proficient in other subjects.



Further details

Computer Science is conceptually difficult and requires a lot of problem solving skills, computational and analytical thinking as well as the high level mathematics - a calculator is not permitted. Teaching of this is of course split between theoretical and practical work, with practical assessment playing a key part to learning the theoretical work.

Students who wish to study for a Computer Science degree should combine it with A Level Mathematics as this is a pre-requisite at many universities.



Email contact

Mr S Sweetman

Email: ssweetman@arnoldlodge.com

ARNOLD LODGE



4 - 18 yrs Co-educational Independent Day School

Creative Digital Media Production

BTEC

Lead teacher: Ms O'Reilly

Duration: 2 years

Level of course: BTEC

Exam board: Pearson

What will I study?

If you see yourself working in film, television, music, publishing or advertising then BTEC Media offers practical and theoretical knowledge needed to get into the industry. The BTEC Digital Media Production qualification is a fun and exciting practical course that is the equivalent of three full A-Levels.

Media is a challenging and creative industry and at ALS we look at all areas including: newspapers, magazines, video games, film, TV and more.

During the course you will produce a varied portfolio of media work that includes a print media, a pre-production portfolio, a blog and a short film. Assessment methods are varied to give you the best opportunity to succeed.

Assessment: How will I be assessed?

Two Internally Assessed Assignments (filming and pre-production)

One Externally Assessed Task (practical work-related scenarios completed in realistic, time-based situations.)

One Externally Assessed On Screen Exam (2hrs-Media Representation)

What can I do after this course?

After studying for your BTEC National Level 3 you will have gained a range of skills to prepare you for Higher Education and the workplace. You will be able to apply critical and theoretical understanding to your study of texts, work both independently and collaboratively and use new technology to produce imaginative and creative responses to the world around you. Media Studies is excellent for anyone wishing to work in the areas of film and radio production, web design, advertising, marketing and journalism.

Further details

Students wishing to study Media Studies should be aware that the course will require a high level of personal engagement with current and historical contexts; including those relating to gender, ethnicity and politics. Students also are expected to undertake independent research, create detailed and informative Media blogs and meet strict deadlines.

Email contact

Ms T O'Reilly



Email: toreilly@arnoldlodge.com

Design Technology

A Level

Lead teacher: Mr Sweetman **Duration:** 2 years

Level of course: A Level **Exam board:** Eduqas

To study Design Technology students must have a creative flair and artistic ability. An interest in quality design should also be evident.

What will I study?

The course consists of 7 main topic areas. These are;

- Design and Innovation
- Materials and Components
- Processes
- Industrial and Commercial Practice
- Product Analysis and Systems
- Human Responsibility
- Marketing and Research

These areas are delivered in a mixture of practical design work and industrial visits alongside taught content. The main part of the subject is the practical design NEA which is detailed below.

Assessment: How will I be assessed?

Exam Element: Design and Technology in the 21st Century (50%) - 3 hour written examination

NEA: Design and Make Project : Students will undertake a design and make project showcasing their designing skills (50%)

Students will be able to follow their own design journey for the NEA and have the opportunity to design something to solve a real world problem. Previous project examples have been; A remote control for a wake board trainer, a new eco Geography building for a school, a rugby training aid, a lighting solution for an artists easel, an interactive fitness trainer. The list goes on and on and is only limited by your imagination and creativity.

What can I do after this course?

A good grade in DT leads on to many university courses including Engineering, Architecture, and Product Design amongst others. Students with a strong DT portfolio often receive unconditional offers of university places. University is not the only route following success in DT. Many apprenticeship schemes actively recruit DT graduates as they can demonstrate problem solving skills alongside academic ability.

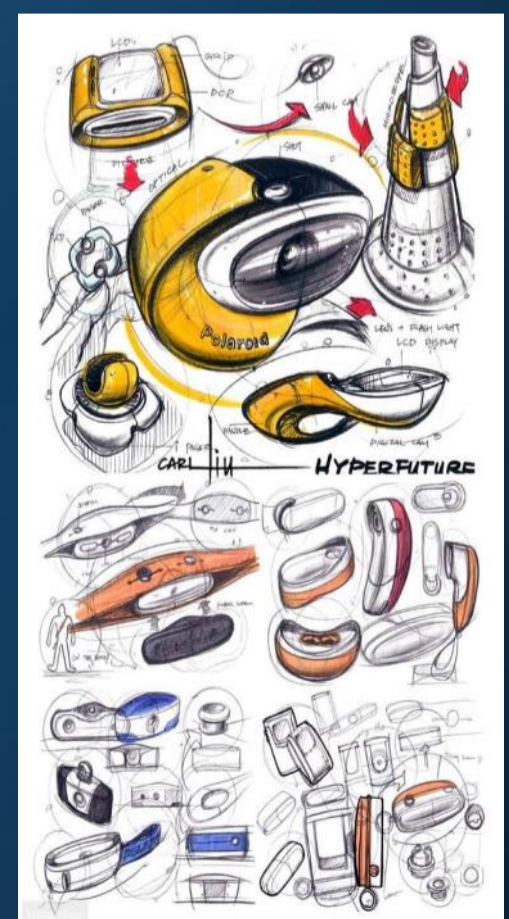
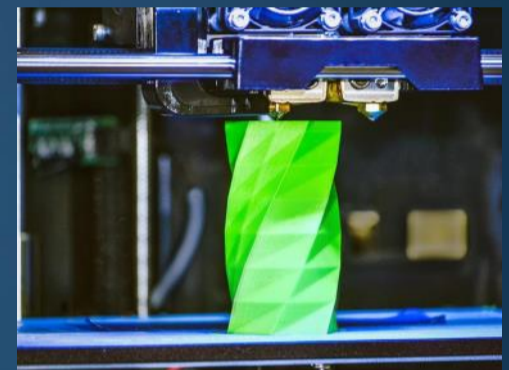
Further details

Product Design is a journey through the design process. We don't set out to design a *thing*, we set out to solve a problem through design. Students often select a design problem from an aspect of their lives they enjoy, a hobby or sport interest, for example. This leads to a very diverse range of projects that cross fertilize creatively between them.

Email contact

Mr S Sweetman

Email: ssweetman@arnoldlodge.com





Drama and Theatre

A Level

Lead teacher: Miss Drury

Duration: 2 Years

Level of course: A Level

Exam board: Eduquas

What will I study?

A Level Drama and Theatre gives students the chance to expand their knowledge of Drama and develop further skills applicable in all aspects of life. A Level Drama and Theatre is divided into practical and theoretical sessions which provide an enjoyable and intellectual look at some of theatre's key plays and techniques.

Each Unit explores a range of interesting concepts and ideas:

Unit 1 Drama and Theatre - Allows students to perform an in depth study of two set texts as well as reviewing a piece of live theatre.

Unit 2 Creating Original Drama - Allows students to devise their own extended piece of theatre based on the methodology of a key practitioner.

Unit 3 - Students will explore a number of theatrical extracts, creating a reflective report analysing and evaluating theatrical techniques in your chosen text.

Assessment: How will I be assessed?

Assessment is completed through a mix of NEA coursework elements, practical performance and written examination.

- Unit 1 - Drama and Theatre - 3 Hour Written Exam (40% of A Level)
- Unit 2 - Creating Original Drama - Practical (30% of A Level)
- Unit 3 - Making Theatre - Practical (30% of A Level)

What can I do after this course?

A Level Drama and Theatre is highly regarded by employers and Universities around the United Kingdom, as a result of its intellectual components and the transferable skills provided. Whether you go on to act, design or something completely different, A Level Drama and Theatre is a superb choice for any incoming Year 12.

Further details

In order to be successful in this subject, students will need to show an ability to work independently and be committed to the substantial amount of practice required to achieve in this subject.

Email contact

Miss C Drury



Email: cdrury@arnoldlodge.com



English Literature

A Level

Lead teacher: Ms Darby

Duration: 2 years

Level of course: A Level

Exam board: AQA

What will I study?

Unit 1: Love through the ages

Study three texts: one poetry and one prose text, of which one must be written pre-1900, and one Shakespeare play.

Unit 2: Literature from 1945 to the present day

Study of three texts: one prose, one poetry and one drama, of which one must be written post-2000

Unit 3: Critical Study (essay)

One extended essay - 2,500 words. Comparing two texts.

Assessment: How will I be assessed?

Unit 1: Written Examination (3 hours)

Unit 2: Written Examination (2.5 hours)

Unit 3: Critical Essay (2,500 words)

What can I do after this course?

After studying for your English Literature A Level you can progress to a Literature degree in Higher Education. English Literature A Level is the key through all gateways; whether this is business, research, education or finance as it requires a close attention to detail, detailed analysis, imaginative and creative responses, problem solving as well as requiring students to demonstrate excellent written communication skills and higher order thinking skills. English Literature is well respected and can aid you in any path you wish to take.

Further details

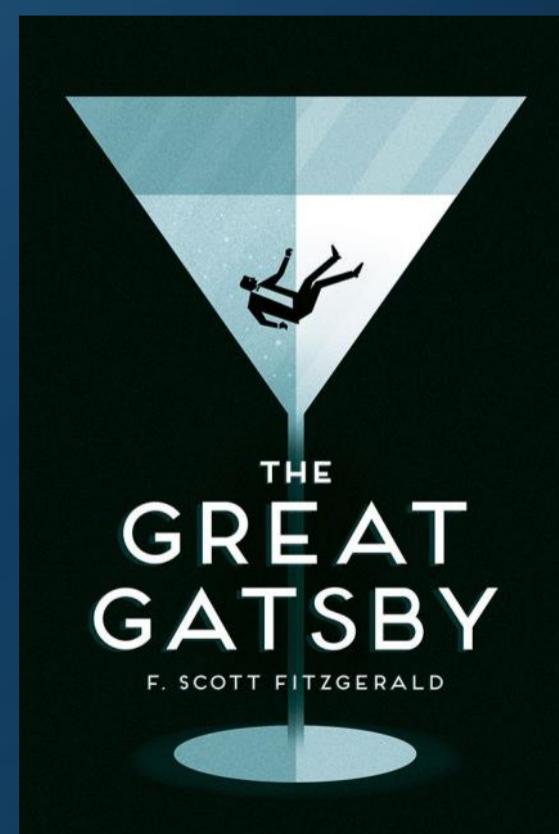
Students wishing to study English Literature should be aware that they will be required to undertake independent research and extended reading away from the course. This course intends to foster a love of literature through a seminar-style approach; the learning will be shared, not dictated.

Students should be comfortable taking written exams and writing extended pieces of independent coursework.

Email contact

Ms F Darby

Email: fdarby@arnoldlodge.com



Food Technology

BTEC

Lead teacher: Ms Crocker

Duration: 2 years

Level of course: Level 3

Exam board: WJEC

What will I study?

Students will study nutrition, the food industry and food science during this course. Students will also design and make food products, as well as solve problems related to food design.

Units covered include during this course:

- Nutrition and planning meals
- Making food safe to eat
- Food science
- Exploring current issues related to food choices

Assessment: How will I be assessed?

50% of this course is assessed internally
50% of this course is assessed externally

What can I do after this course?

This Diploma prepares students for Further Education in Food but can also lead into nutritional science and associated areas. The food and hospitality industry is a major employer either post A Level, with training, or post degree level. This course will help students develop a life long enjoyment and understanding of food and nutrition.

Further details

In a nutshell, Food Technology enables students to use food science for the creation, preservation, processing, packaging and distribution of food products. As a food technologist you will be able to create foods that satisfy the increasing demand for meals which look fantastic, taste great and are marketable. A diploma Food Technology will lead to a wide career choice. People are always going to eat, so there will always be a food industry, and it is a growth area.



MasterChef



Email contact

Ms E Crocker

Email: ecrocker@arnoldlodge.com

ARNOLD LODGE



4 - 18 yrs Co-educational Independent Day School

Geography

A Level

Lead teacher: Miss Davenport

Duration: 2 years

Level of course: A Level

Exam board: AQA

What will I study?

Physical Geography: Water and carbon cycles; Glacial systems and landscapes; Hazards

Human Geography: Global systems and global governance; Changing places; Contemporary urban environments

Geography fieldwork investigation: An individual investigation including data collected in the field. This can be related to any aspect of specification content and must be developed by the individual.



Assessment: How will I be assessed?

Physical Geography (40% of A Level) - 2 hour 30 minutes exam paper, 3 sections, 120 marks total. Sections A and B are 36 marks each, section C is 48 marks.

Human Geography (40% of A Level) - 2 hour 30 minutes exam paper, 3 sections, 120 marks total. Sections A and B are 36 marks each, section C is 48 marks.

Both exams contain a mixture of short answer, levels of response and extended prose questions.

Fieldwork investigation (20% of A Level)

This is a 3000-4000 word investigation worth 60 marks. It will be marked by the teachers and moderated by AQA.



What can I do after this course?

Geography combines very well with both science and arts subjects at A level. It is an academic subject highly regarded by top universities as 'a facilitating subject most likely to be required for entry to degree courses'. Geography develops skills valuable in many careers.

Further details

Geography is unique in bridging the natural sciences, social sciences and economics. It is for those who find the physical nature of our planet awesome, care about the impact humans have on it, and hold views about how we should respond to the many challenges we face.



Email contact

Miss R Davenport

Email: rdavenport@arnoldlodge.com

History

A Level

Lead teachers: Ms Smith

Duration: 2 years

Level of course: A Level

Exam board: AQA

What will I study?

Unit 1: The Tudors, 1485– 1609

Unit 2: The Cold War, 1945–1991

Unit 3: Coursework: Social revolution in Britain during the Twentieth Century

Assessment: How will I be assessed?

Unit 1: Written Examination - 2 hours 30 minutes (40%)

Unit 2: Written Examination - 2 hours 30 minutes (40%)

Unit 3: Coursework Essay - 3,500 words (20%)

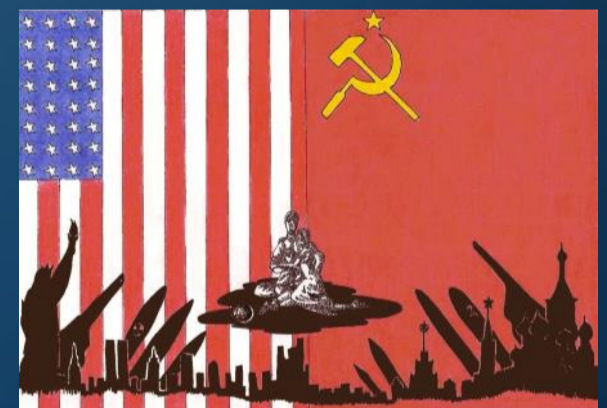
What can I do after this course?

After studying for your History, A Level, you will be perfectly equipped for further study in Higher Education. You will be prepared to take on research tasks, to collate, analyse and evaluate data, to work independently and to assert your own informed opinion. History is excellent for anyone wishing to work as journalists, teachers, researchers, working in the media, financial sales, marketing or even as a Historian.

Further details

Students wishing to study History should be aware that the course will require a high level of independent research and analysis. You will be required to read historical works and to judge their significance and bias in your own opinion.

History will be taught in open seminars so expect to come to lessons prepared to debate and discuss. Students should be comfortable taking written exams and producing independent, extended written pieces of coursework.



Email contact

Ms C Smith

Email: csmith@arnoldlodge.com



Mathematics

A Level

Lead teacher: Mr Brewer

Duration: 2 years / 1 year

Level of course: A Level / AS Level

Exam board: OCR

What will I study?

Paper 1 covers core mathematical concepts including: Proof, Algebra and functions, Coordinate geometry, Sequences and series, Trigonometry, Exponentials and logarithms, Differentiation, Integration, Numerical methods.

Paper 2 covers any content from Paper 1 and content from: Vector, Quantities and units in mechanics, Kinematics, Forces and Newton's laws, Moments.

Paper 3 covers any content from Paper 1 and content from Statistical sampling, Data presentation and Interpretation, Probability, Statistical distributions, Statistical hypothesis testing.

Assessment: How will I be assessed?

Paper 1: Core Content (33⅓%) - 2 hour examination

Paper 2: Pure Mathematics with Mechanics (33⅓%) - 2 hour examination

Paper 3: Pure Mathematics with Statistics (33⅓%) - 2 hour examination

What can I do after this course?

Advanced GCE Mathematics is a much sought after qualification for entry to a wide variety of full-time courses in higher education. There are also many areas of employment which place a high value on the skills required for A Level mathematics, such as logical thinking, problem solving and statistical analysis. Careers which either require A Level maths or are strongly related include: economics, medicine, architecture, engineering, accountancy, psychology, teaching, information and communications technology and physics.

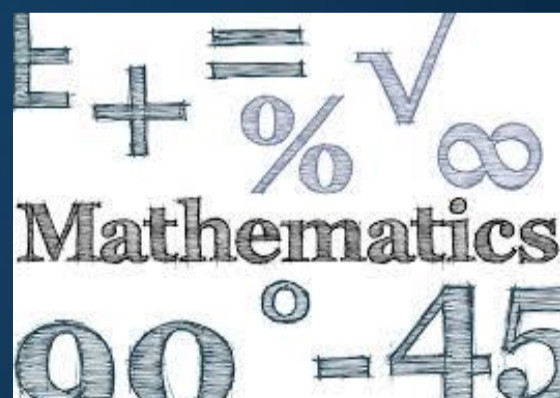
Further details

An essential part of mathematical study is the challenge of analysing and solving a problem. You will be expected to select and apply the mathematics you have learnt in order to solve problems set in a real-life context. You will not have to write essays but you are required to communicate and justify your solutions clearly and logically. Mathematics is about 'doing' rather than learning facts, so you will also need to be committed to the substantial amount of practice required to achieve in this subject.

Email contact

Mr D Brewer

Email: dbrewer@arnoldlodge.com



ARNOLD LODGE



4 - 18 yrs Co-educational Independent Day School

Music

A Level

Lead teacher: Miss Crisp **Duration:** 2 years

Level of course: A Level **Exam board:** Edexcel

What will I study?

A Level Music covers an extremely broad range of skills and styles of music. Music students must be passionate about their subject, open-minded to new composers and genres of music and be versatile to the varied demands of the course. Both NEA components can be highly tailored to the strengths of the candidate in terms of their chosen instrument/s and genres and will feature support from peripatetic staff as well as classroom staff. The Appraisal exam features extended written components and demonstrations of aural skills, assessed via 13 varied set works.

Due to the demands of the course, pupils need to have studied GCSE Music as a prerequisite and be fluent readers of staff notation.



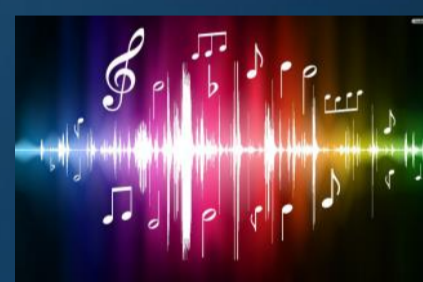
Assessment: How will I be assessed?

Assessment will involve both NEA and an assessment in the summer exam series of Year 13

Performing NEA - 30% - A performance recital of music at least Grade 6 or above in standard

Composing NEA - 30% - Two compositions, one to a brief and one either free or to a brief

Appraising exam - 40% - A written paper that is 2 hours and 10 minutes long. This will cover four listening / dictation questions and two essay questions. Areas of music studied for this exam consist of Instrumental Music, Vocal Music, Music for Film, Popular Music and Jazz, Fusions and New Directions. Two set works are studied for each area.



What can I do after this course?

Many students continue to pursue Music at University of Conservatoire level. Music is also a highly sought after A Level by Russell Group Universities, including Oxbridge, with Cambridge University stating Music as one of its facilitating subjects that it looks to see that applicants have, even when they are not applying for Music course. Due to this versatility, Music A Level candidates are often in demand due to transferable skills, such as dedication, creativity and motivation, that the course nurtures.



Further details

Music is a tough A Level to study due to the diversity and demands of the course mentioned above. Equally, however, it is also incredibly rewarding, because the reason we study it is due to our passion. It's hard work and it requires dedication (even just through the most basic daily practice of your instrument!) but studying a subject every single day that you are willing to put that time and effort in for is a total privilege and pleasure.

Email contact

Miss S Crisp

Email: scrisp@arnoldlodge.com

Music: Composition/Performance pathway

BTEC

Lead teacher: Miss Pearson

Duration: 2 years

Level of course: BTEC

Exam board: RSL

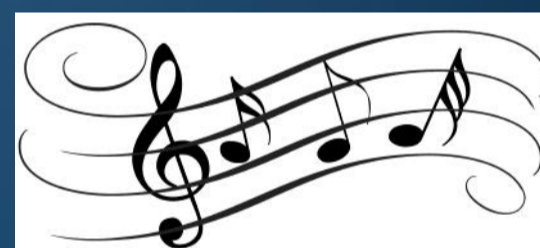
What will I study?

This course gives students the equivalent of one 'A' Level. You will study a number of core modules as well as optional modules, which cover content such as 'practical harmony application', 'composing for different musical styles', 'improving instrumental performance' and 'music rehearsal skills'.



Assessment: How will I be assessed?

The course is not exam based. You undertake a mixture of practical and theoretical/analytical project-based work which is split into different units. Students are assessed on the portfolios they create of this work during each unit.



The course consists of practical sessions, harmony seminars, workshops and live performances, covering a range of skills and knowledge, consisting of core and specialist elements. An overall grade is awarded for each unit.

What can I do after this course?

This qualification enables you the opportunity to prepare yourself for a place in the music industry or for entry to a Higher Education course.



Email contact

Miss C Pearson

Email: cpearson@arnoldlodge.com

ARNOLD LODGE

4 - 18 yrs Co-educational Independent Day School

Physics

A Level

Lead teacher: Mr Hawkins

Duration: 2 years

Level of course: A Level

Exam board: AQA

What will I study?

A Level students will study 9 units in total. 8 are compulsory: Measurements and their errors, Particles and radiation, Waves, Mechanics and materials, Electricity, Further mechanics and thermal Physics, Fields and their consequences and Nuclear Physics. The 9th unit is optional, with a choice from Astrophysics, Medical Physics, Engineering physics, Turning points and Electronics. The first 5 topics can be assessed separately as an AS Level, giving greater flexibility for students who are unsure whether to sit an AS or the full A Level course.



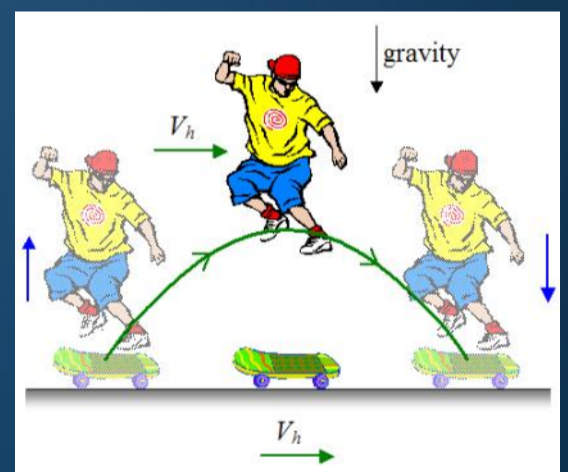
Assessment: How will I be assessed?

A Level:

Paper 1: (Units 1-5 + 6.1 (Periodic motion)) 2 hours, 85 marks - 34% of A Level

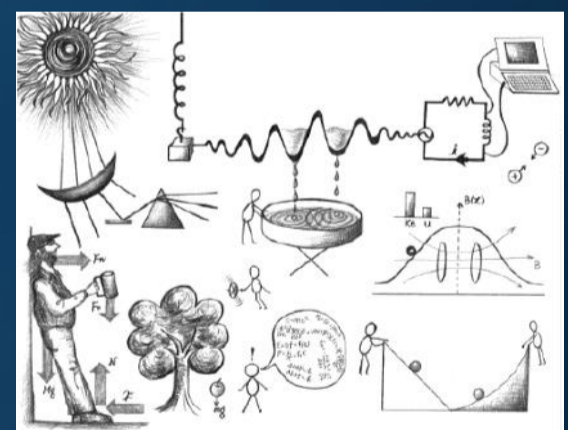
Paper 2: (Units 6.2 - 8) 2 hours, 85 marks - 34% of A Level.

Paper 3: (Practical skills and data analysis and optional module) 2 hours, 80 marks - 32% of A Level.



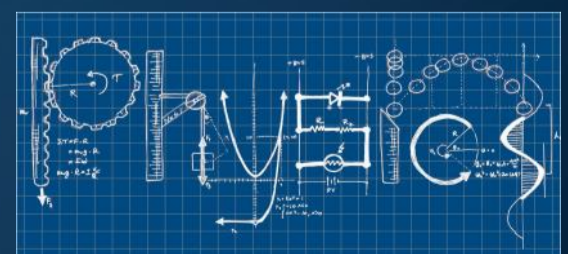
What can I do after this course?

Physics is a perfect choice of subject for people who would like a career in technical and practical areas such as engineering, design, electronics or computing, as well as opening up many industrial routes for example in the petrochemical or manufacturing industries. Due to the challenging and analytical nature of the subject, Physics is highly valued by prospective employers.



Further details

Physics is conceptually difficult but also includes a requirement for a significant amount of learning of facts. It also features a significant amount of high level mathematics. You should be comfortable manipulating equations without triangles. Teaching of this is of course split between theoretical and practical work, with practical assessments playing a key part.



Email contact

Mr A Hawkins

Email: ahawkins@arnoldlodge.com

ARNOLD LODGE

4 - 18 yrs Co-educational Independent Day School

Politics

A Level

Lead teacher: Mr Colledge

Duration: 2 years

Level of course: A Level

Exam board: AQA

What will I study?

Paper 1: Government & Politics of the UK

This paper focuses on the make up of politics in the UK from the way the government works through to how we interact with the democratic process.

Paper 2: The government and politics of the USA

This paper focuses on the politics of the USA and requires a comparative study of the structural, rational and cultural similarities and differences between the US political system and the UK.

Paper 3: Political Ideas

This paper focuses on political ideologies covering Liberalism, Conservatism, Socialism and then one additional ideology from Nationalism, Feminism, Multiculturalism, Anarchism and Ecologism.

Assessment: How will I be assessed?

A Level:

Paper 1: Government & Politics of the UK

Written exam: 2 hours - 33⅓ % of A Level

Paper 2: The government and politics of the USA

Written exam: 2 hours - 33⅓ % of A Level

Paper 3: Political Ideas

Written exam: 2 hours - 33⅓ % of A Level

What can I do after this course?

Covering news and current affairs from the UK and US, it helps you understand how the UK country is run and develops research, written communication and debate skills. It also helps grow your confidence. It's ideal if you're considering studying politics, sociology, ethics, advertising or journalism at university and is highly regarded by employers in industries including politics, international organisations, the media, government and the civil service.

Email contact

Mr L Colledge

Email: lcolledge@arnoldlodge.com



Psychology

A Level

Lead teacher: Miss Jones

Duration: 2 years

Level of course: A Level

Exam board: AQA

What will I study?

A Level Psychology is a fascinating course where you will cover a range of issues. The topics covered are social influence, memory, attachment, psychopathology, approaches in psychology, biopsychology, research methods, issues and debates in psychology, gender, aggression and schizophrenia.



Assessment: How will I be assessed?

Assessment will involve the writing of short and long essay style answers.

External assessment will involve sitting three examinations at the end of the two year course:

Paper 1: Introductory Topics in Psychology (120 minutes) 33.3% of A Level
This paper covers social influence, memory, attachment and psychopathology.

Paper 2: Psychology in Context (120 minutes) 33.3% of A Level

This paper covers approaches in psychology, biopsychology and research methods.

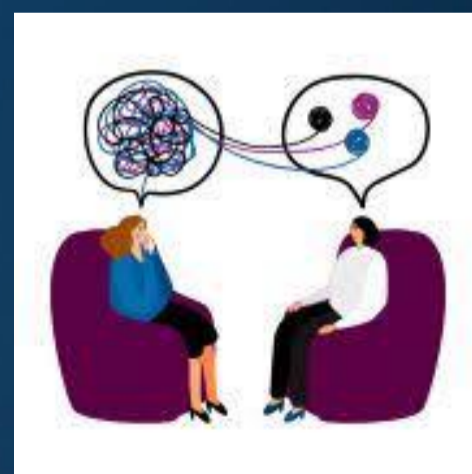
Paper 3: Issues and Options in Psychology (120 minutes) 33.3% A Level

This paper covers issues and debates in psychology, gender, aggression and schizophrenia.



What can I do after this course?

Psychology is a great subject to study because it will not only give you a number of transferable skills, it will also teach you more about the way people think. An understanding of the human mind is useful in a number of careers. The top seven degree courses taken by students who have an A Level in psychology are: Psychology, English studies, Sociology, Business studies, Teaching, Sport and exercise science and Law.



Email contact

Miss A Jones

Email: ajones@arnoldlodge.com

Sociology

A Level

Lead teacher: Ms Graves

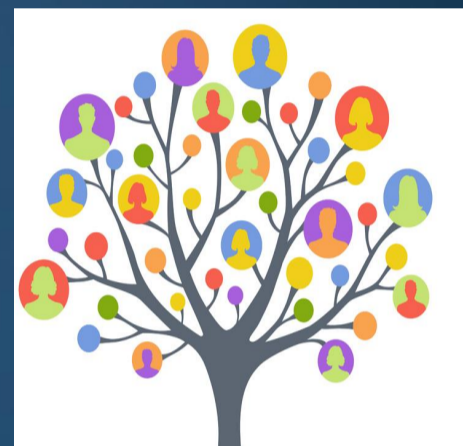
Duration: 2 years

Level of course: A Level

Exam board: AQA

What will I study?

Sociology involves the study of the relationship between the individual and society. It follows a scientific approach in that sociologists can only make and present arguments about society and people's behaviour on the basis of factual evidence and reasoned theoretical arguments. Sociology also involves the development of critical thinking by asking questions about who we are as people, how we live our lives and how this is influenced by the way society is organised. You will study in detail specific aspects of society such as family life and relationships; the role of religion; the education system; social inequality; globalization; crime and deviance.



Assessment: How will I be assessed?

Assessment will involve the writing of short and long essay style answers.

External assessment will involve sitting three examinations at the end of the two year course:

Unit 1: Education with Theory and Methods (120 minutes)

Unit 2: Topics in Sociology: Families and Households; Beliefs in Society (120 minutes)

Unit 3: Crime and Deviance with Theory and Methods (120 minutes)

What can I do after this course?

Sociology provides you with a range of skills which are transferrable to other subjects and job roles. Sociology is useful for anyone thinking of becoming a teacher, social researcher social worker, youth worker, probation officer and working in marketing and advertising. Sociology is a highly respected A Level by the leading universities in the UK.



Further details

Sociology is the study of society and how certain social institutions and cultural values influence us in our daily lives as well as all people around the world. It can be a very positive tool for young people to help them understand their place in the world as well as how society operates around them. Importantly, in an age of globalisation and digital communication technologies such as smartphones and social media platforms, who we are as people and why we live the lives we do has become an even more important question. Sociology will provide you with some answers to these questions and importantly allow you to make up your own mind about them.

Email contact

Ms A Graves

Email: agraves@arnoldlodge.com





Spanish

A Level

Lead teacher: Miss Morgan

Duration: 2 years

Level of course: A Level

Exam board: AQA

What will I study?

This qualification is linear, meaning all the exams are taken at the end of the course. The content of the course focuses on several aspects of Spanish life, including politics, social issues and culture. Students will also gain knowledge and understanding of grammar. In addition, students will study 2 set texts or one set text and a film.

Assessment: How will I be assessed?

Written exam: 2 hours 30 minutes (50% of A Level)

- Listening and responding to a variety of spoken passages (30 marks)
- Reading and responding to a variety of texts (50 marks)
- Translation into English; a passage of minimum 100 words (10 marks)
- Translation into Spanish; a passage of minimum 100 words (10 marks).

Written exam: 2 hours (20% of A Level)

2 questions to be answered in Spanish on two set texts or one set text and a film. Students are advised to write approximately 300 words per essay.

Oral exam: 21–23 minutes (30% of A Level)

- Discussion of a sub-theme (5-6 minutes) with the discussion based on a stimulus card which is studied during 5 minutes preparation time (25 marks).
- Presentation (2 minutes) and discussion (9–10 minutes) of individual research project (35 marks).

What can I do after this course?

After studying Spanish A Level, many students go on to higher education before entering the world of work in this country or abroad. Spanish requires excellent listening skills, the ability to communicate effectively and logical thinking to get to grips with all the grammar. These skills are all highly valued both by universities and employers.

Further details

Students wishing to study Spanish should be aware that all the units contain a significant quantity of new grammar and vocabulary. As listening and reading pages are authentic, students will need to spend time independently reading Spanish texts, listening to Spanish TV/Radio or watching Spanish films in order to develop their listening skills. Students need to be comfortable with sitting terminal papers and committed to the substantial revision that will be required when preparing for the examinations.

Email contact

Miss B Morgan

Email: bmorgan@arnoldlodge.com



Sport

BTEC

Lead teacher: Mr Gear **Duration:** 2 years

Level of course: Level 3 (single or Dual Award) **Exam board:** Pearson

What will I study?

For the Extended Certificate (1 A Level equivalent Units 1, 2, 3 and 4).

For the Diploma (2 A Levels equivalent Units 1, 2, 3, 22, 23)

Mandatory Units

- Unit 1: Anatomy and Physiology
- Unit 2: Fitness Training and Programming for Health, Sport and Well-being
- Unit 3: Professional Development in the Sports Industry
- (Unit 22: Investigating Business in Sport and the Leisure Industry)
- (Unit 23: Skill Acquisition in Sport)

Optional Units

- Unit 4: Sports Leadership
- Unit 5: Application of Fitness Testing
- Unit 6: Sports Psychology
- Unit 7: Practical Sports Performance
- Unit 8: Coaching Performance



Assessment: How will I be assessed?

Externally-assessed units

- Examinations on Units 1 and 2 – all learners take the same assessment at the same time, normally with a written outcome.
(Anatomy and Physiology and Fitness Training and Programming for Health, Sport and Well-being)

Internally-assessed units

- Written assignments
- Practical assessment
- Presentations

What can I do after this course?

After studying BTEC Sport you may go on to higher education or to the world of work. Physical Education is recognized as a science and is of benefit to people with an eye to a career in leisure, teaching or coaching, physiotherapy, nursing, sports management, sports journalism, sports psychology or nutrition.

Further details

The qualification is equivalent in size to one A Level. You will study 4 units of which 3 are mandatory and 2 are external. The dual award is equivalent to 2 A Levels.

Email contact

Mr T Gear

Email: tgear@arnoldlodge.com



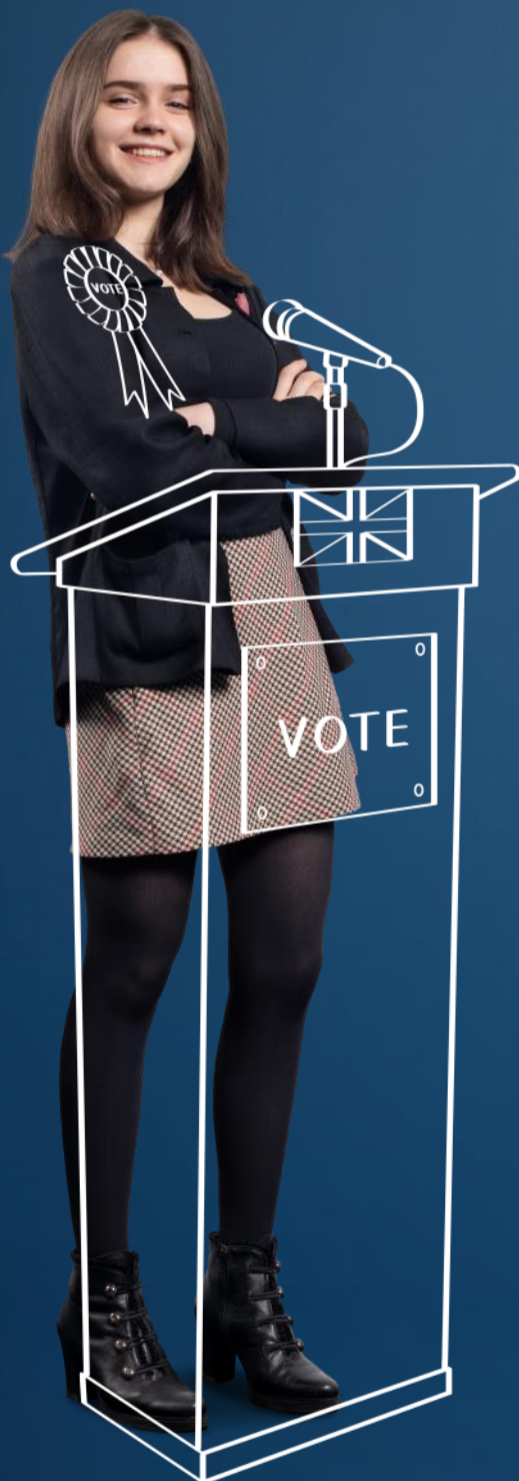
ALS lets ME
ASPIRE



4 - 18 yrs Co-educational Independent Day School

Sixth Form

Flexibility, Opportunity and Independence
Apply now for places in September 2023



ALS lets ME
BELIEVE

Arnold Lodge School

15-17 Kenilworth Road,
Leamington Spa,
CV32 5TW
01926 778050
admissions@arnoldlodge.com
www.arnoldlodge.com

Arnold Lodge offers a breadth
of BTEC and A Level subjects. If
you are looking for an
outstanding independent school
to study A Levels, BTECs or
even a combination of both,
why not **get in touch?**